

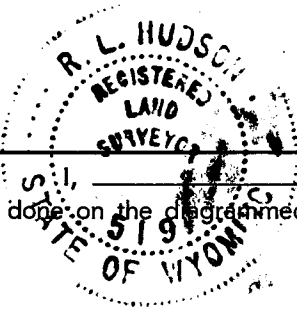
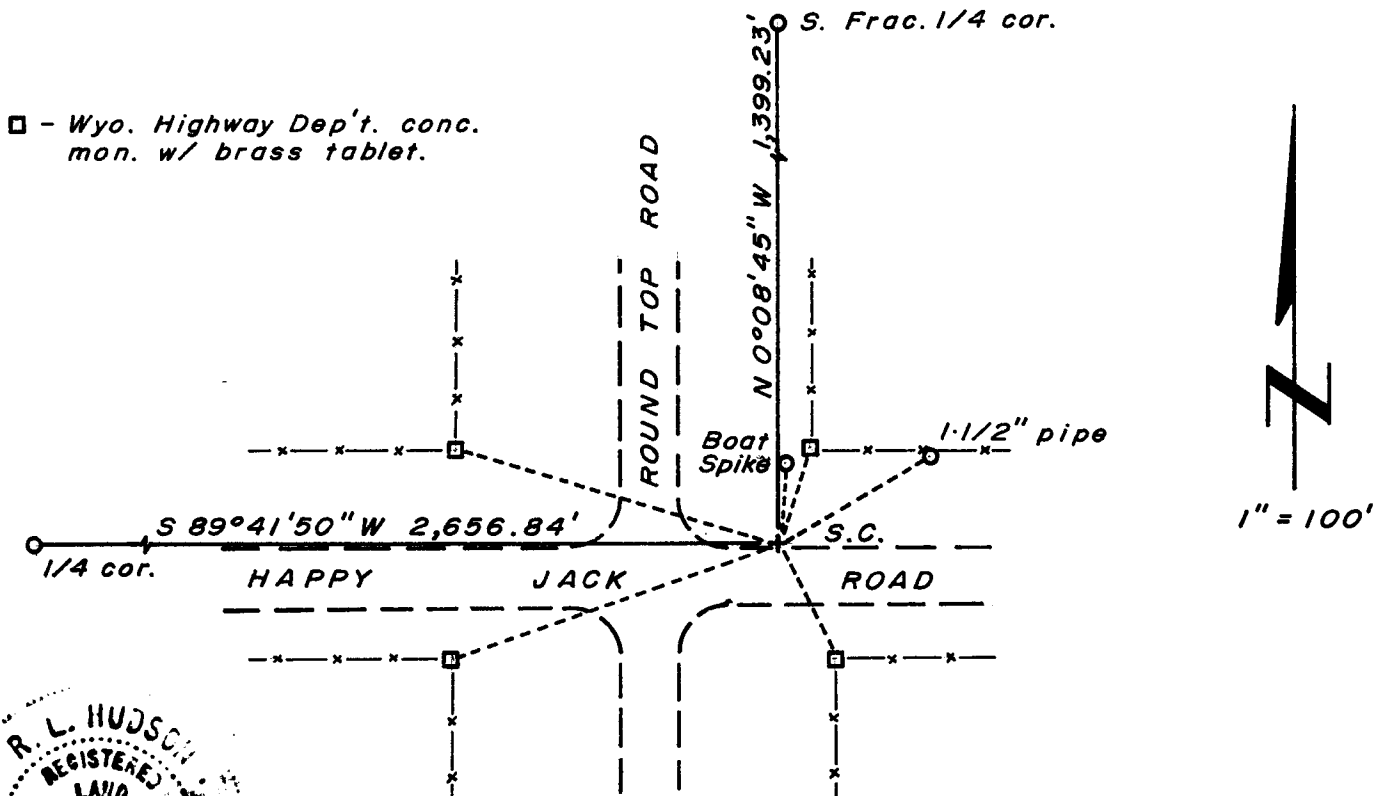
CERTIFIED LAND CORNER RECORDATION

LOCATION T.14N., R.67W. S.33 S.34 S. 4 S. 3 T.13N., R.67W. 6th P.M.	DESCRIPTION OF CORNER EVIDENCE FOUND, AND ORIGINAL RECORD (If known) Corner position determined from distance ties obtained from County Engineer's Office. A boat spike bears N 0°31'15" E, 40.00 feet distant. A 1½" dia. iron pipe bears N 60°07'45" E, 89.90 feet distant.
--	--

DESCRIPTION OF MONUMENT AND ACCESSORIES ESTABLISHED TO PERPETUATE THE ORIGINAL LOCATION OF THIS CORNER:

At the corner: Corner falls at edge of pavement, no monument set.
 Accessories: W.H.D. R/W mon.; N 16°28'15" E, 51.10 feet distant.
 W.H.D. R/W mon.; S 25°51'45" E, 65.40 feet distant.
 W.H.D. R/W mon.; S 70°56'15" W, 180.66 feet distant.
 W.H.D. R/W mon.; N 73°59'45" W, 177.10 feet distant.

SKETCH, WITH COURSE AND DISTANCE TO ADJACENT CORNER IF DETERMINED IN THIS SURVEY.
 (May Sketch or Paste Reproduction on Reverse Side.)



R.L. Hudson certify that I have carefully performed or reviewed the work done on the diagrammed corner as reported on this recordation form and approve the same.

R. L. Hudson Wyoming L.S. No. 519
 Signature of Surveyor Registration No.

STATE OF WYOMING,
 Office of Clerk and Recorder,
 County of Taramie

This "corner record" was filed for record on the 29 day of December, 1975, was noted on the cross-index plat and is assigned page No. 1, in book No. Filed.

Janet C. Whitehead
 County Official

Cross Index No. <u>213</u>	T. <u>14</u>	R. <u>67</u>	Mer.
<u>413</u>	T. <u>13</u>	R. <u>67</u>	Mer.
_____	T. _____	R. _____	Mer.
_____	T. _____	R. _____	Mer.
_____	T. _____	R. _____	Mer.
_____	T. _____	R. _____	Mer.
_____	T. _____	R. _____	Mer.

The State of Wyoming }
County of Laramie } SS

This instrument was filed for record
at 244 o'clock P M. on the
29th day of Dec
A. D. 19 75 and duly recorded in
book 1 on page 1414

Janet C Whitbread

County Clerk & Ex-Officio Register at Deeds
By _____ Deputy

Photographed ✓
Indexed ✓
Posted ✓
Assessor ✓